

VERSAT – P3D

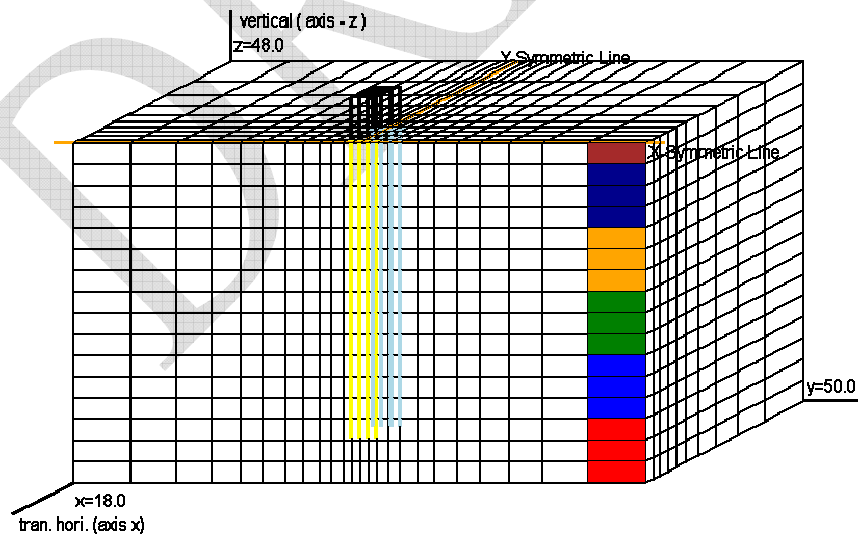
Version 2006

QUASI-3D DYNAMIC FINITE ELEMENT ANALYSIS OF SINGLE PILES AND PILE GROUPS

© 2000-2006 Dr. G. WU

© 2000-2006 Wutec Geotechnical International, B.C., Canada

Website: www.wutecgeo.com



LIMITATION OF LIABILITY

Although this software, VERSAT-P3D, has been tested extensively by the publisher and experience of using it would indicate it is accurate within the limits given by the assumptions of the theory and data used, the publisher (Wutec Geotechnical International) and the author (G. Wu) assume no liability whatsoever with respect to any use of this software or with respect to any damages or losses that may result from such use. Any use of this software to solve problems is the sole responsibility of the user as to whether the output is correct or correctly interpreted or the problem correctly modelled.

TABLE OF CONTENTS

LIMITATION OF LIABILITY.....	2
1.0 TECHNICAL MANUAL FOR VERSAT-P3D.....	4
1.1 Introduction	4
1.2 Dynamic Stiffness and Damping of Pile Foundation.....	5
1.2.1 Stiffness and Damping in Horizontal Direction.....	5
1.2.2 Radiation Damping at Boundaries	8
1.2.3 Stiffness and Damping in Vertical Direction.....	8
1.2.4 Stiffness and Damping of Pile Group in Rocking.....	10
1.2.5 Stiffness and Damping of Pile Group in Translation & Rotation.....	11
1.3 Response of Pile Foundation to Cyclic Loads.....	12
1.4 Response of Pile Foundation to Earthquake Loads.....	13
1.4.1 Equations of Motion in Horizontal Y Direction	14
1.4.2 Simulation of Soil Non-Linear Stress-Strain Response	14
1.4.3 Equivalent Viscous Damping.....	15
1.4.4 Consideration of Rocking Stiffness and Damping of Pile Group.....	16
1.5 Finite Element Formulation.....	17
1.5.1 Eight-Node Soil Element	17
1.5.2 Two-Node Pile Element	17
1.5.3 Eight-Node (4-Beam) Pile Element	18
1.5.4 Batter Piles	19
2.0 USERS MANUAL FOR VERSAT-P3D	20
2.1 Input and Output Data Files.....	20
2.1.1 For VERSAT-P3D Run.....	20
2.1.2 Terminology in VERSAT-P3D Processor and PILE3D.P3D	20
2.1.3 Input Explanations for PILE3D.ATT.....	24
2.2 Prepare Input Data	25
2.2.1 Define 3D Grid in X-Y-Z and Soil Units in Z	25
2.2.2 Define Piles for Location-Length and Pile Units	26
2.2.3 Define Properties of Pile and Soil Units	28
2.2.4 Define Control Parameters for Analysis	29
2.2.5 Define Parameters for Shaking Mode	30
2.3 Start An Analysis.....	31
2.4 Retrieve Time-History Response	31
3.0 EXAMPLES OF VERSAT-P3D MODELS.....	31
4.0 REFERENCES	34

1.0 TECHNICAL MANUAL FOR VERSAT-P3D

1.1 Introduction

In addition to the quasi-3D theory background as described in Wu and Finn (1997^a, 1997^b), a special 8-node (4-beam) pile element has been used in VERSAT-P3D. In addition to representing the pile by a line-beam element, which does not take a physical space in a 3D model, each pile segment can also be represented by four beams arranged at the four corners of a pile cross-section. For simplicity, a pile cross-section, either square or circular, is modeled as a square. The four beams are rigidly tied to each other so as to produce identical response, or to act as a single pile element. The 4-beam pile element is introduced to take into account the effect of the physical space of a pile section on the response of a single pile or a pile group.

A VERSAT-P3D analysis can be carried out in one of the following three modes of analysis:

- **Impedance Mode:** Calculating dynamic stiffness and damping (impedance) in a frequency domain analysis;
- **Loading Mode:** Applying cyclic loads (shear forces and bending moments) at the pile head or at the pile cap in a frequency domain analysis; and
- **Shaking Mode:** Applying earthquake loads or dynamic loads at the pile head or at the pile cap in a time domain analysis.

The technical manual presents the theory and assumptions used in each of the above three modes of analyses.

^a Wu, G., and Finn, W.D.L. 1997. Dynamic elastic analysis of pile foundations using finite element method in the frequency domain. Canadian Geotechnical Journal, 34: 34-43.

^b Wu, G., and Finn, W.D.L. 1997. Dynamic nonlinear analysis of pile foundations using finite element method in the time domain. Canadian Geotechnical Journal, 34: 44-52.

1.2 Dynamic Stiffness and Damping of Pile Foundation

Under the **Impedance Mode**, dynamic stiffness and damping of pile foundations are obtained for the following

- Horizontal Y direction
- Rotation about X axis (or in YoZ plane)
- Coupling term of above two, and
- Vertical Z direction

A separate model and thus a separate analysis will be required in order to compute horizontal and rotational stiffness and damping in the other horizontal direction, i.e., X direction. On the other hand, stiffness and damping for rotation about Z axis (or torsion) is not computed at present. If required, they need to be estimated from horizontal stiffness and damping.

1.2.1 Stiffness and Damping in Horizontal Direction

Subject to shear waves propagating in the vertical direction, the soils undergo mainly shearing deformations in the horizontal (XoY) plane except in areas near the piles where compression deformations develop in the direction of motion (Figure 1). The compressive deformations also generate shearing deformations in YoZ plane. In the light of these observations, assumptions are made that the dynamic motions are governed by shear waves in the XoY and YoZ planes, and compression waves in the Y direction. Deformations in the vertical direction and normal to the direction of motion are neglected to simplify a full 3D analysis to a quasi 3D analysis. The quasi 3D analysis considers displacements in one direction, Y, in a full 3D geometry.

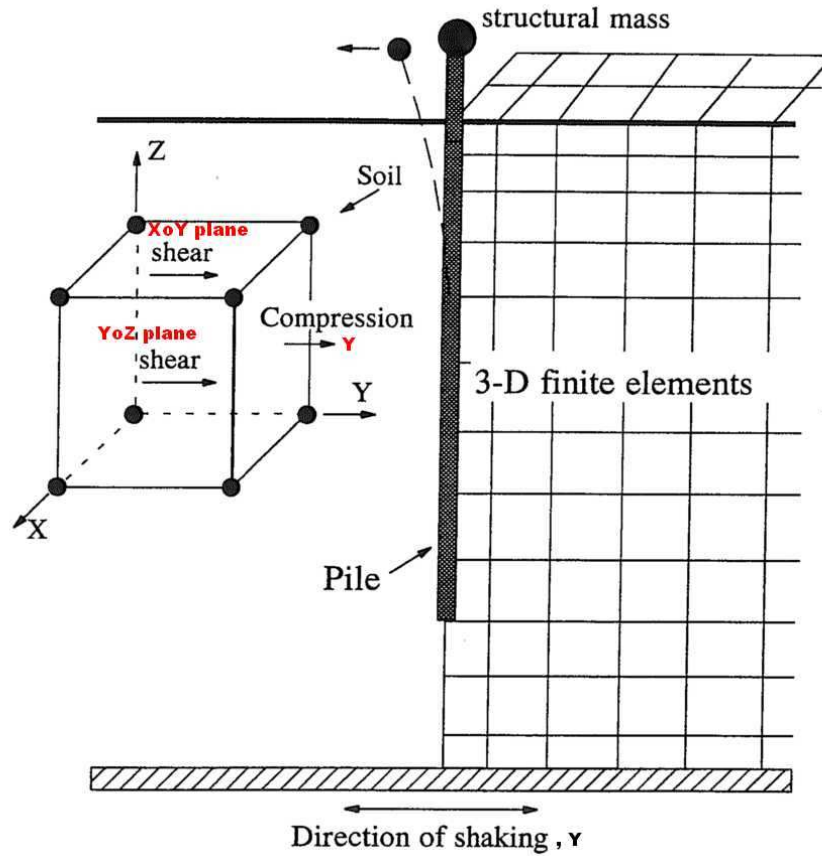


Figure 1 Quasi-3D Finite Element Model in Horizontal Y-Direction

As presented in Wu (1994), the governing equation describing the free vibration of the soil continuum in the Y direction is written as

$$[1] \quad \rho_s \frac{\partial^2 v}{\partial t^2} = G^* \frac{\partial^2 v}{\partial x^2} + \theta G^* \frac{\partial^2 v}{\partial y^2} + G^* \frac{\partial^2 v}{\partial z^2}$$

Where v is displacement in the Y direction, ρ_s is the mass density of soil, and G^* is a complex shear modulus. The complex shear modulus G^* is expressed as $G^* = G(1 + i \cdot 2\lambda)$ in which G is the shear modulus of soil, and λ is the hysteretic damping ratio of the soil. The parameter θ was derived to be $\theta = 2/(1 - \mu)$ assuming a plane strain condition in the Y direction (Wu and Finn, 1999), and μ is Poisson's ratio of the soil.

Displacements in the Y direction are set to be free at the lateral boundaries of the finite element model. Therefore, a quasi-3D model can be created to simulate free-field response by not using any piles in it.

The impedances, K_{ij} , are defined as the complex amplitudes of harmonic forces (or moments) that have to be applied at the pile head in order to generate a harmonic motion with amplitude of unity in a specified direction. The horizontal, cross-coupling, and rotational impedances of a pile at its head, represented by K_{vv} , $K_{v\theta}$, and $K_{\theta\theta}$, respectively, are defined as (Figure 2):

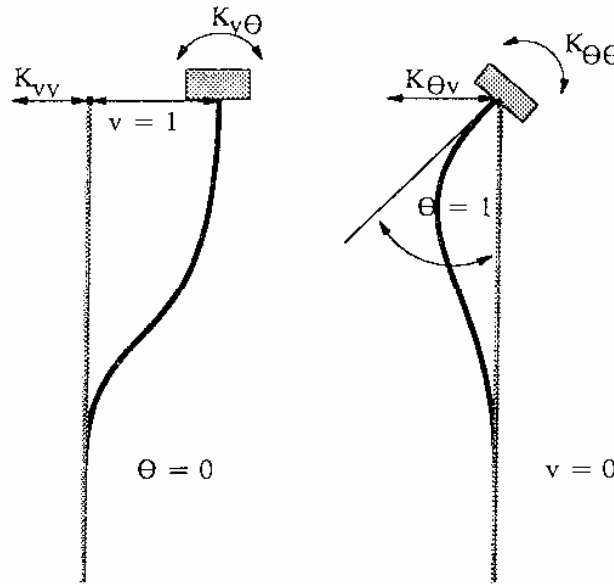


Figure 2 Definition of Horizontal Pile Impedance

- K_{vv} - with rotation fixed, the shear force required to cause a unit horizontal displacement
- $K_{\theta\theta}$ - with horizontal displacement fixed, the bending moment required to cause a unit rotation at the pile head
- $K_{v\theta}$ - a cross-coupling term of the above two

The impedances (K_{vv} , $K_{v\theta}$, $K_{\theta\theta}$) are complex values, and they are expressed by the real and imaginary parts as

$$[2] \quad K_{ij} = k_{ij} + i C_{ij} \quad \text{..or..} \quad K_{ij} = k_{ij} + i \omega c_{ij}$$

Where k_{ij} = stiffness, C_{ij} = damping, $c_{ij} = C_{ij}/\omega$ = damping constant (or coefficient) for equivalent viscous damping, and ω = the angular frequency of the applied loads.

The hysteretic damping of soils is included in the complex shear modulus in Eq. [1]. The radiation damping of a 3D geometry adopted in VERSAT-P3D consists of energy dissipating boundaries including the horizontal base and the four vertical side surfaces.

1.2.2 Radiation Damping at Boundaries

The shear force caused by a particle velocity at the boundary is computed by

$$F = \text{shear modulus } (G) * \text{particle velocity} \div \text{shear wave velocity } (V_s) * \text{area } (dA)$$

With $G = \rho V_s^2$, then

$$F = (\rho V_s dA) * \text{particle velocity}$$

Therefore, the damping matrix for an area in shearing is written as

$$[3] \quad c_s = \int_A \rho V_s dA$$

Similarly the damping matrix for an area in compression is expressed as

$$[4] \quad c_p = \int_A \rho V_p dA$$

Where V_p and V_s are the wave velocity in compression and in shearing. In VERSAT-P3D, damping matrix is formed using the consistent formulation of above equations.

Under the shear wave in the Y direction, the horizontal base and the two vertical side surfaces parallel to Y are assumed to be shearing boundary and the damping at these surfaces is derived using Eq. [3]. The two vertical side surfaces parallel to X are assumed to be in compression and the damping is derived using Eq. [4].

The energy transmitting boundary is applied only when the frequency of the loads is equal to or greater than 3.14 rad/sec (or 0.5 Hz). Otherwise, static boundary conditions are applied.

1.2.3 Stiffness and Damping in Vertical Direction

Subject to compression waves propagating in the vertical direction, the soil medium mainly undergoes compressive deformations in the vertical direction, Z (Figure 3). In the two horizontal directions, shearing deformations are generated due to the internal friction of the

soil. Although compressions occur in the two horizontal directions, assumptions are made that the normal stresses in the two horizontal directions due to vertical excitation are small and can be neglected. Therefore the dynamic motions of the soil are governed by the compression wave in the vertical direction, Z, and the shear waves propagating in the two horizontal directions, X and Y.

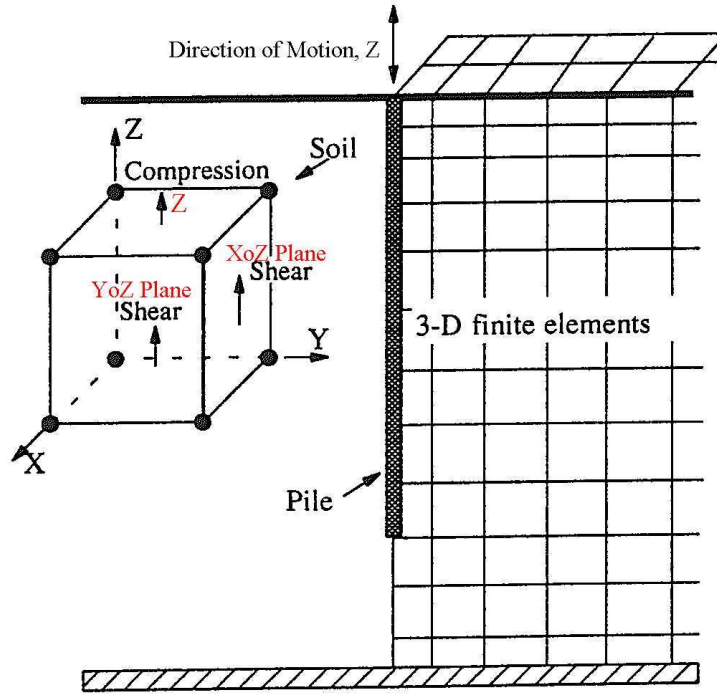


Figure 3 Quasi-3D Finite Element Model in Vertical Z Direction

Analogous to the governing equation in the horizontal Y direction, the quasi-3D wave equation of soil in the vertical direction is given by

$$[5] \quad \rho_s \frac{\partial^2 w}{\partial t^2} = G^* \frac{\partial^2 w}{\partial x^2} + G^* \frac{\partial^2 w}{\partial y^2} + \theta_z G^* \frac{\partial^2 w}{\partial z^2}$$

Where w is the soil displacement in the Z vertical direction. The parameter θ_z is derived to be $\theta_z = 2(1 + \mu)$ based on equilibrium of the model in the vertical Z direction.

The vertical impedance of a pile at its head, represented by K_{zz} , is defined as

- K_{zz} - Vertical force required at the pile head that induces a unit vertical displacement.

The hysteretic damping of soils is included in the complex shear modulus in Eq. [5]. The radiation damping of a 3D geometry adopted in VERSAT-P3D consists of energy dissipating boundaries including the horizontal base and the four vertical side surfaces.

Under compression waves in vertical Z direction, the four vertical side surfaces parallel to Z are assumed to be shearing boundary and the damping at these surfaces is derived using Eq. [3]. The horizontal base is assumed to be in compression and the damping is derived using Eq. [4].

Again, the energy transmitting boundary is applied only when the frequency of the loads is equal to or greater than 3.14 rad/sec (or 0.5 Hz). Otherwise, static boundary conditions are applied.

1.2.4 Stiffness and Damping of Pile Group in Rocking

The rocking impedance of a pile group is a measure of resistance to rotation of the pile cap due only to the resistance of each pile in the group to vertical displacements. The rocking impedance of a pile group, represented by K_{rr} , is quantified as summation of moments of the axial pile forces about the centre of rotation, Point O in Figure 4, induced by a unit rotation about Point O. This definition is quantitatively expressed as

$$[6] \quad K_{rr} = \sum r_i \bullet F_i$$

Where r_i are distances between Point O and an individual pile in the group, and F_i are the amplitudes of axial forces at the pile heads.

The rocking impedance, stiffness and damping, is computed assuming that piles located on the right side of Point O (Figure 4) mirror the piles located on the left side of Point O. In other words, only the piles on the left side of Point O are used in calculation, and the computed rocking impedance is multiplied by two to derive the rocking impedance of the pile group. This simplification only applies to calculation of rocking impedance. The calculation of vertical impedance of a pile group uses all piles in a 3D model.

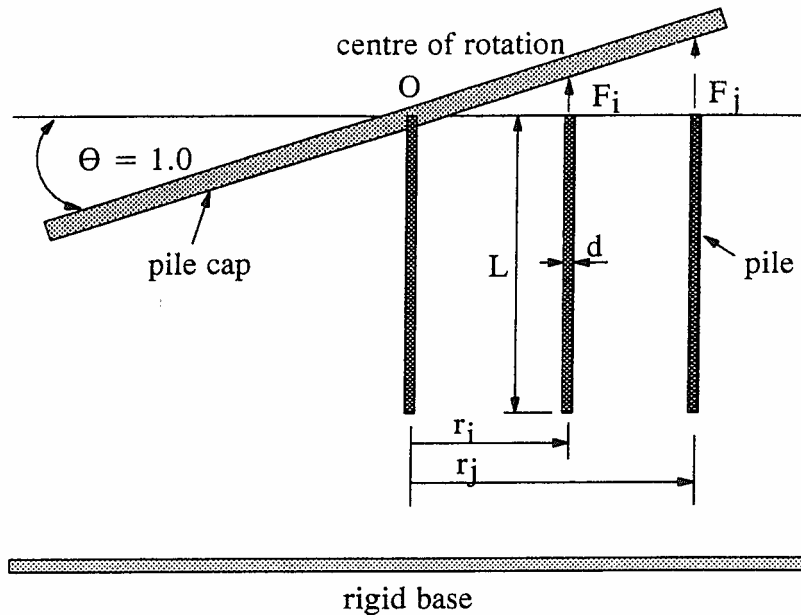


Figure 4 Calculation of Rocking Impedance in a Pile Group

The radiation damping in the calculation of rocking impedance takes the same form as in the calculation of vertical impedance.

1.2.5 Stiffness and Damping of Pile Group in Translation & Rotation

Piles Fixed to the Pile Cap

For a pile group with piles fixed (rigidly connected) to the pile cap, the rotational impedance of the pile group consists of two distinct components, the rotational impedance of each individual pile and the rocking impedance of the pile group. In a VERSAT-P3D calculation, the two components are computed separately. The rotational impedances of individual piles in the group are computed using a quasi-3D model in the horizontal Y direction, and group effect is taken into account. The rocking impedance of the pile group is computed using a quasi-3D model in the vertical Z direction, and group effect is also taken into account.

The rotational impedance of the pile group is a summation of the two components. For this condition, the horizontal displacement of the pile cap is coupled with rotation of the pile cap.

Piles Pinned to the Pile Cap

For a pile group with piles pinned to the pile cap, the rotational impedance of the pile group consists of only the rocking impedance of the pile group. Rotational impedance of individual piles does not provide resistance to rotation of the pile cap because the piles do not carry bending moment at the pile head. The bending moment of the pile cap is carried out by axial forces in the piles.

For this condition, the horizontal displacement of the pile cap is uncoupled with, or independent to, the rotation of the pile cap, and the horizontal impedance of the pile group is the so-called “apparent stiffness and damping” that represents the shear force required to cause unit displacements when the pile head is free to rotation.

1.3 Response of Pile Foundation to Cyclic Loads

Under the **Loading Mode**, cyclic loads can be applied only in the horizontal Y direction. Response to cyclic loads applied in the other horizontal X direction needs to be carried out in a separate analysis. Analysis of response to cyclic loads in the vertical loads is not available at present.

The steady-state response of pile foundation subject to cyclic loads (harmonic shear force and/or bending moment) can be obtained by solving the equations of motion in the frequency domain using the same method as for the calculation of impedance. However, unlike in the impedance calculation where the analysis is linear elastic, the response analysis can be done either in linear elastic or in nonlinear elastic.

For problems involving high magnitude of loads that can induce nonlinear response in soils, the response to the cyclic loads will have to be computed using a method of iteration to seek compatibility between magnitude of loads and stiffness of soils. In a given iteration, the analysis is conducted as linear elastic. In a subsequent iteration of analysis, the soil stiffness (or shear modulus to be specific) and damping are adjusted based on the level of shear strain induced in the previous iteration. The relationships between shear modulus, damping ratio and shear strain can be specified by the users.

Shear failure and tension failure in soils may also be simulated by providing appropriate values of Yield Strength and Tensile Strength to a soil unit. A very low shear modulus is assigned to a soil element when the soil element is determined to be failed.

For response analysis of a pile group subject to cyclic loads, the rocking impedance of the pile group is taken into account by adding the rocking impedance, calculated in a separate analysis using the method described in Section 1.2.4, to the rotational term of complex stiffness in the equations of motion. This method for consideration of rocking impedance is illustrated in Figure 5.

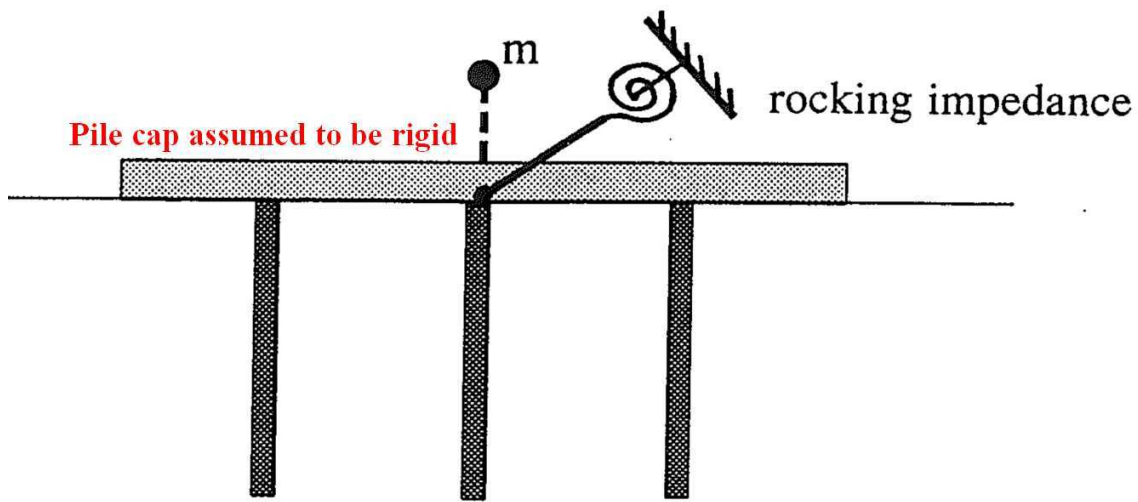


Figure 5 Consideration of Rocking Impedance of A Pile Group Subject to Horizontal Loads or Shaking in Y Direction

1.4 Response of Pile Foundation to Earthquake Loads

Under the **Shaking Mode**, earthquake motions are applied in the horizontal Y direction only. Response analysis of pile foundations subject to vertical ground motions is not formulated at present although analysis of a pile group under horizontal shaking would also involve calculation of rocking stiffness and damping. The calculation of rocking impedance of a pile group is performed separately in the vertical Z direction (see Section 1.2.4) and in parallel to the time history analysis of the pile group. Therefore the rocking stiffness and damping of a pile group is updated continuously with time in the time domain analysis that reflects the nonlinear behaviour of soils.

1.4.1 Equations of Motion in Horizontal Y Direction

The governing equation of motion, Eq. [1], for quasi-3D analysis in the horizontal Y direction, has been solved in the frequency domain for calculation of pile impedance and for response analysis of pile foundations subject to cyclic loads at the pile head or the pile cap.

For response analysis of pile foundations subject to earthquake loads in the horizontal Y direction, the governing equation of motion (Eq. [1]) will be solved in the time domain that can simulate the time-dependent nonlinear behaviour of soils under earthquake shaking.

In a time domain analysis, the dynamic equilibrium equations of a soil-pile quasi-3D model can be written in a matrix form as

$$[7] \quad [M]\{\ddot{v}\} + [C]\{\dot{v}\} + [K]\{v\} = -[M]\{I\}\ddot{v}_o(t)$$

in which $\ddot{v}_o(t)$ is the base accelerations, $\{I\}$ is a unit column vector, and $\{\ddot{v}\}$, $\{\dot{v}\}$ and $\{v\}$ are nodal accelerations, velocities and displacements, respectively, relative to the model base. $[M]$, $[C]$ and $[K]$ are the mass, damping and stiffness matrices. Direct step-by-step integration using the Wilson- θ method is used to solve the equations of motion in Eq. [7].

The non-linear hysteretic behaviour of the soil is modeled by using a variation of the equivalent linear method similar to that used in the computer program SHAKE (Schnabel et al., 1972). Additional features such as tension cut-off and yielding are also incorporated in the program to simulate the possible gapping between soil and pile near the soil surface and yielding in the near field.

1.4.2 Simulation of Soil Non-Linear Stress-Strain Response

An equivalent linear method is employed in the program to model the non-linear hysteretic behaviour of soil. The basic assumption of this method is that the hysteretic behaviour of soil can be approximated by a pair of secant shear moduli and viscous damping ratios which are compatible with the level of shear strain. Typical relationships between shear modulus, damping ratio and shear strain can be found in the literature such as Seed and Idriss (1970), and Seed et al. (1986). This method has been accepted and widely used in engineering practice, and it has been incorporated in the computer code SHAKE (Schnabel et al., 1972).

for 1-D ground motion analyses and in QUAD-4 (Idriss et al., 1973) for 2-D plane strain analyses.

When the equivalent linear method is applied to earthquake problems involving irregular amplitudes of shear strains with time, the current practice is to assign a constant effective shear strain to a soil element to represent the variation of shear strains with time. The effective shear strain is commonly taken as 65% of the maximum shear strain experienced by the soil element during the life of earthquake shaking, and it is used to determine constant effective G and λ of the soil element that are then used in the final iteration of analysis.

To approximate better the nonlinear behaviour of soil under strong shaking, compatibility between secant shear modulus, damping ratio and shear strain should be sought at a time interval within which the shear strain history can be suitably represented by a single value of shear strain. This ensures that the time histories of shear moduli and damping ratios in each soil element are followed during the analysis in contrast with the equivalent linear approach described earlier in which a single effective value is used to represent the entire time history.

In a practical VERSAT-P3D analysis, the shear moduli and damping ratios are updated at specified time intervals which balance accuracy and computational time. For the analyses conducted to date using this method, it was found to be sufficient to update the soil properties at every 0.5 to 1.0 sec based on the peak strain levels from the previous time interval.

1.4.3 Equivalent Viscous Damping

The hysteretic damping ratio λ of soil is included in the dynamic analysis by using equivalent viscous damping. A procedure for estimating viscous damping coefficients for each individual element proposed by Idriss et al. (1974) is employed. The main advantage of this procedure is that a different degree of damping can be applied in each finite element according to its shear strain level. The damping is essentially of the Rayleigh-type, which is both mass and stiffness dependent.

The damping matrix $[C]_{elem}$ for a soil element is given by

$$[8] \quad [C]_{elem} = \lambda_{elem} \left(\frac{8}{5} \omega_1 [M]_{elem} + [K]_{elem} \frac{2}{5\omega_1} \right)$$

Where ω_1 is the fundamental frequency of the pile-soil system and is applied to each element. The frequency ω_1 is obtained by solving an eigen-value problem of the system and is updated with time. The hysteretic damping ratio, λ_{elem} , is prescribed as a function of element shear strain (Seed et al., 1986), and this is also time dependent.

The viscous damping as expressed in Eq. [8] provides a damping ratio of λ_{elem} at two frequencies, one at ω_1 and the other at four times ω_1 . At other frequencies, the damping ratio could be either higher or lower than λ_{elem} .

1.4.4 Consideration of Rocking Stiffness and Damping of Pile Group

The rocking stiffness and damping constant of the pile group is taken into account by adding them, calculated in a separate analysis using the method described in Section 1.2.3, to the rotational term of stiffness and damping constants in the equations of motion. This method for the consideration of rocking impedance is illustrated in Figure 5.

1.5 Finite Element Formulation

1.5.1 Eight-Node Soil Element

An 8-node brick element is used to model the soil (Wu, 1994; Wu and Finn, 1997a). At each soil node, nodal variables consist of displacement in one direction only, i.e., Y direction in a horizontal analysis mode and Z direction in a vertical analysis mode. This is an assumption made in the quasi 3D model, and it is recognized that a node in 3D should contain displacements in X, Y and Z directions.

1.5.2 Two-Node Pile Element

Horizontal Analysis Mode

In this analysis mode, only the bending motion in the plane of motion (YoZ plane) is considered. At each pile node, nodal variables consist of displacement in Y direction, and rotation in the YoZ plane.

Piles are modelled using the ordinary Eulerian beam theory. Two-node pile elements are used to model the bending behavior of piles subject to horizontal loads. The pile mass density, ρ , is used to form the diagonal mass matrix of a pile element. The bending stiffness of the two-node pile element is given by

$$[9] \quad [K] = \frac{EI}{L^3} \begin{bmatrix} 12 & 6L & -12 & 6L \\ 6L & 4L^2 & -6L & 2L^2 \\ -12 & -6L & 12 & -6L \\ 6L & 2L^2 & -6L & 4L^2 \end{bmatrix}$$

Where

E = Young's modulus of the structural member (the pile);

I = the bending moment of inertia of the pile^c;

L = length of the pile element.

^c For example, $I=1/12*bh^3$ is for a rectangular section with a width of b and a height of h; and $I=1/64\pi*d^4$ (where $\pi=3.1416$) is for a circular section having a diameter of d.

Vertical Analysis Mode

In the vertical analysis mode, variables of a pile node contain only displacement in the vertical Z direction. The axial stiffness of the two-node pile element is given by

$$[10] \quad K_A = \frac{EA}{L}$$

Where:

A = sectional area of the pile (E, L are the same as in Eq. [9]).

1.5.3 Eight-Node (4-Beam) Pile Element

In short, the 8-node pile element takes the space as it is an 8-node soil element and it has the properties of a 2-node beam element distributed into the eight pile nodes. In other words, a pile segment is represented by four beams arranged at the four corners of the 8-node pile element that represents the actual volume of the pile segment.

The purpose for using the 8-node pile element is to take into account the effect of pile diameter on pile response. A 2-node pile element is a line-beam element that does not take any physical space in a 3D model and therefore does not reflect the diameter effect on pile behaviour. The use of one or **multiple** 8-node pile elements to represent a large-diameter structure (such as a caisson, a vertical tunnel, or a shaft) section makes it possible to account for the diameter effect on response.

When a structure section is represented by multiple 8-node pile elements, the geometric properties (bending moment of inertia and section area) are evenly distributed to the number of elements on the section. Of course, if one 8-node pile element is used, the actual properties of the pile section are assigned to this pile element.

The procedure for such a representation has been verified by analyzing a vertical caisson itself without any soil elements surrounding it. It is strongly recommended that the behaviour of such a structural section of multiple 8-node elements be tested thoroughly prior to applying it to a soil-structure interaction analysis.

1.5.4 Batter Piles

Batter piles are approximately represented by modifying the horizontal stiffness of piles in a horizontal analysis, and the vertical stiffness of piles in a vertical analysis mode.

The horizontal stiffness of a pile element in Eq. [9] is modified as

$$[11] \quad K_{\text{hori}} = \frac{12EI}{L_a^3} \cos^2 \alpha + \frac{EA}{L_a} \sin^2 \alpha$$

Where α = the inclination angle to Z axis of the pile projected in YoZ plane, and

The rotational stiffness of the pile element in Eq. [9] is not affected by the batter.

The vertical stiffness of a pile element in Eq. [10] is modified as

$$[12] \quad K_{\text{vert}} = \frac{12EI}{L_a^3} \sin^2 \beta + \frac{EA}{L_a} \cos^2 \beta$$

Where β = the inclination angle of the pile to Z axis.

L_a = actual pile length of the batter pile along its axis.

The calculation of pile stiffness is taken care of by the program once the angles of inclination, α and β , are entered for a pile.

The accuracy of the representation for batter piles is limited to the assumptions made above in associated with the angle of pile inclination. It is recommended that the approximation be used for piles with batter angle less than 30°.

2.0 USERS MANUAL FOR VERSAT-P3D

2.1 Input and Output Data Files

2.1.1 For VERSAT-P3D Run

The Windows-based interactive program, **VERSAT-P3D Processor**, is used to prepare and save the input data file for the computing program, **VERSAT-P3D Run**. Depending on the problem at hand, one to two input data files are required:

- PILE3D.P3D: Main input file required by all analyses. When the **Shaking Mode** is run, the earthquake accelerations are appended at the end of this file manually;
- PILE3D.ATT: This file is required in a nonlinear analysis. It contains data describing nonlinear relationships between shear modulus, material damping, and shear strains. Some published data are compiled and included in this that is distributed.

The results of the analysis are contained in three output data files:

- PILE3D.OU1 This file contains echo of model data and computed stiffness and damping values.
- PILE3D.OU2 This file contains printed node and element response. Under **Loading Mode**, the response is in complex value and contains real and imaginary parts. Under **Shaking Mode**, the response is in real value.
- PILE3D.HIS This file contains time-history response of the finite nodes and elements that are requested by the users. The data can be retrieved using a support program, V-HIS3D.exe.

VERSAT-P3D always uses the above names as data files for input and output.

2.1.2 Terminology in VERSAT-P3D Processor and PILE3D.P3D

TITLE	Title of the problem
IMODE:	Analysis mode including one of the three modes: <ul style="list-style-type: none">➤ Impedance Mode: impedance calculation (frequency domain analysis);➤ Loading Mode: harmonic loads at pile top/cap (frequency domain analysis); and➤ Shaking Mode: earthquake loads or loads at pile top/cap (time domain analysis).
KIMP	Index for computing impedance with a value of Yes or No
ICHANG	Method of analysis (linear elastic or nonlinear or equivalent linear)
IROCK	Pile head/cap condition using one of the three conditions: <ul style="list-style-type: none">➤ piles are pinned to the cap and moments at pile heads=0;➤ piles are fixed to the cap; and➤ piles are fixed to the cap and rotation of the cap is zero.

ISYM	Index for mesh symmetry (a full size mesh; or a half size mesh)
ACCEG	Acceleration due to gravity such as 9.81 m/s^2 or 32.2 ft/s^2
UNITWW	Unit weight of water such as 9.81 kN/m^3 or 62.4 lb/ft^3
PA	Atmospheric pressure such as 101.3 kPa or 2116 psf
NMAT	Total number of soil and pile material units
IMTYPG	Type of material; (5 for pile and 3 for soil)
For IMTYPG = 5;	
	<ul style="list-style-type: none"> ➤ EMAT(I, 1) = K_E, Young's modulus constant (beam or truss), $E=K_E \text{ Pa}$ ➤ EMAT(I, 2) = cross section area of the pile unit ➤ EMAT(I, 4) = bending moment of inertia of the pile unit ➤ EMAT(I, 5) = unit weight of the pile such as kN/m^3 ➤ EMAT(I, 6) = reduction factor; 0.5 if a pile is located on the X-symmetric line (parallel to Y-axis) in a half-mesh analysis, 1.0 for all other cases. ➤ EMAT(I, 7) = α inclination angle of a battered pile in the YOZ plane ➤ EMAT(I, 8) = β inclination angle of a battered pile to the vertical Z axis ➤ EMAT(I, 9) = damping ratio of the pile unit in percentage ➤ Others are not used for a pile material.
For IMTYPG = 3;	
	<ul style="list-style-type: none"> ➤ EMAT(I, 2) = K_G, shear modulus constant ($G= K_G \text{ *Pa}$) ➤ EMAT(I, 3) = unit weight of the soil unit ➤ EMAT(I, 4) = strain factor used in a nonlinear analysis (such as 1.0 for using peak strain from previous time interval). ➤ EMAT(I, 5) = tensile strength of soil unit ➤ EMAT(I, 6)= i^{th}-set of curve in PILE3D.att for describing modulus reduction and damping variation with effective shear strain such as 1.0 for 1st curve, 3.0 for the 3rd ➤ EMAT(I, 7) = Poisson's ratio (required) ➤ EMAT(I, 8) = shear strength of the soil unit ➤ EMAT(I, 9) = initial damping ratio of the soil unit in percentage
NNODES	Total number of nodes in the 3D model
NE	Total number of elements in the 3D model
NODE0	The principal pile cap node
NFIX	Total number of pile nodes at the pile top/cap
NODFIX	List of numbers of all pile top/cap nodes constrained/slaved to NODE0.
XMAX	X-coordinate where the energy transmitting boundary applied
YMAX	Y-coordinate where the energy transmitting boundary applied
XSYM	X-coordinate where the X-symmetric line is located
YSYM	Y-coordinate where the Y-symmetric line is located
ZCAP	Z-coordinate where the pile cap nodes are located
ZMAX	same as ZCAP
ZROCK	same as ZCAP
ZSOIL	Z-coordinate of the soil or ground surface

SHEAR0 Shear force applied at NODE0 (see notes below)
MOM0 Moment applied at NODE0.

Notes:

- The above two parameters are required only if **Loading Mode** is specified. Use 50% of actual values if a half-mesh is used for the analysis. For analysis of a pile group, a rigid pile cap is automatically assumed to exist at top of piles. The pile cap is represented by a single nodal point, NODE0, which is the first pile node at the level of the cap. All the remaining pile-top nodes are slaved or constrained to NODE0. Rocking stiffness, AKROCK, for the pile group is calculated for rotation resistance about Y-symmetric line (parallel to X-axis) including piles located between Y=0.0 and Y=YSYM.

Table 1

Mode	Parameters	Descriptions
Impedance Mode	N_OMEG	Number of frequencies for impedance calculation
	OMEG_0	First angular frequency (rad/sec) for impedance calculation
	D_OMEG	Incremental frequency for each subsequent calculation.
Loading Mode	N_OMEG	<ul style="list-style-type: none"> When N_OMEG ≥ 5, total loads are equally divided into (N_OMEG-4) increments. The final load increment is iterated 5 times. When N_OMEG < 5, total loads are applied and iterated N_OMEG times.
	OMEG_0	Angular frequency (rad/s) of the shear/moment loads. When impedance is requested, N_OMEG sets of impedance are calculated at this frequency.
	D_OMEG	Not used
Shaking Mode	N_OMEG	Rocking stiffness and damping of a pile group are updated, and shear moduli and damping ratios of all soil elements are saved, for a total of N_OMEG times (i.e., at every NPRN2 ^d steps of numeric integration).
	OMEG_0	<ul style="list-style-type: none"> When impedance calculation is requested, the saved soil data are used for calculation of impedance after the dynamic time-history analysis is completed. A total of N_OMEG sets of impedance are calculated at this angular frequency, OMEG_0 (rad/s); When impedance calculation is not requested, this parameter is used for computing rocking impedance only.
	D_OMEG	Not used

^d NPRN2=NPOINT/N_OMEG, and a minimum NPRN2 of 50 is set by the program.

The following section applies when **Shaking Mode** is used.

NLOD	Index on where the acceleration is applied, i.e., at a node or base shaking
NODMAS	Node number of node where concentrated mass and/or stiffness is attached
PMASS(1)	Mass at the node and it must be divided by 2.0 in a half mesh analysis
PMASS(2)	Mass moment of inertial at the node and it must be divided by 2.0 in a half mesh analysis
PMASS(4):	concentrated rotational stiffness
PMASS(5):	concentrated rotational damping
PMASS(6):	concentrated horizontal stiffness
PMASS(7):	concentrated horizontal damping
PMASS(8):	concentrated cross-coupling stiffness (including '-' sign)
PMASS(9):	concentrated cross-coupling damping (including '-' sign)
IOPEQ	Index about the type of input motion (earthquake type or harmonic SINE type)
NNPOUT	Total number of elements plus nodes at which time-history response are output to PILE3D.HIS.
NPOUT(J)	List of node number or element number at which time-history response is to be output in PILE3D.HIS. A positive number represents a node number, and a negative number for an element.
NPOINT	Number of input acceleration or load points (a maximum of 20000 points).
DTIME	Time increment for input acceleration or load time history
AMPL	Amplitude of SINE input acceleration or load
FREQ	Frequency in Hz (or 1/sec) of the SINE motion
EQTITL	Title of earthquake or load time history
FAMPL	Scaling factor for input accelerations or loads
FMT	Data format of the input accelerations or loads such as (8F10.4, 8G10.0)
ACCE(J)	List of input accelerations or load time histories using FMT

2.1.3 Input Explanations for PILE3D.ATT

This file is needed only if a nonlinear analysis is used. It contains variations of shear modulus ratio and damping ratio as a function of shear strain.

1. NCURVE (I8)
NCURVE: number of sets of curves contained in this file
(One set of curves contains both modulus reduction and damping curves)
 2. NMOD (I8)
NMOD: number of data points used for describing this set of curves
 3. GAMM(I) (16F8.0)
GAMM(i): list of shear strains (from small to large) in percentage
 4. FMOD(I) (16F8.0)
FMOD(i): list of ratios of shear modulus G/G_{\max} corresponding to GAMM(i)
 5. FDMP(I) (16F8.0)
FDMP(i): list of damping ratios (in percentage) corresponding to GAMM(i)
- * Input card 2 to 5 must be repeated NCURVE times.

2.2 Prepare Input Data

2.2.1 Define 3D Grid in X-Y-Z and Soil Units in Z

- Go to “DEFINE” and select “3D Finite Element Grid in XoY and Z”.
- Input Pile Diameter in Step 1;
- Choose method for grade in Step 2.
 - Click “Standard Single Pile Grid” or “Single Pile Grid for High Freq...” can give you a predefined grid in XoY plane for a given Pile Diameter.
 - Input the Z-coordinate at top of each layer by providing the thickness of each layer from bottom-up (note: the base is always set to Z=0 and Z increases bottom-up).
 - Input soil material number for each layer under “SoilUnit”
- Input the Z-coordinate of soil (ground) surface in Step 3. In some cases, the pile cap is located above the soil (ground) surface, and the highest Z-coor should be greater than the ground surface in these cases. The pile cap is always set to be at the highest Z-coor of the model.
- Click “Update Change” to refresh the changes
- Click “Accept Change” will exit from this window and save the changes

Input Finite Element Grid in Horizontal Plane - XOY

Step 1:
Average Pile Diameter =

Step 2: Choose method for grid generation
☒ Standard single pile grid - 8x24 ☐ User defined grid
☐ Single pile grid - 9x18 for high frequency loads (a0>0.15)

GRID - X				GRID - Y				VERTICAL GRID - Z			
No_X	dX	X-coor		No_Y	dY	Y-coor		No_Z	dZ	Z-coor	SoilUnit
1	0	0		1	0	0		1	0	0	0
2	4.5	4.5		2	5	5		2	2	2	2
3	3	7.5		3	4	9		3	2	4	2
4	2.5	10		4	3	12		4	2	6	2
5	2	12		5	2.5	14.5		5	2	8	3
6	1.5	13.5		6	2	16.5		6	2	10	3
7	1	14.5		7	2	18.5		7	2	12	3
8	0.75	15.25		8	1.5	20		8	2	14	3
9	0.75	16		9	1.5	21.5		*			
*				10	1	22.5					
				11	1	23.5					
				12	0.75	24.25					
				13	0.75	25					
				14	0.75	25.75					
				15	0.75	26.5					
				16	1	27.5					
				17	1	28.5					
				18	1.5	30					
				19	1.5	31.5					
				20	2	33.5					
				21	2	35.5					

Step 3:
Z-coor of soil surface (Zsoil) =

Note: X,Y,Z-coor are for display only!
Edit dX, dY, dZ

Figure 6 Set 3D Finite Element Grids in XoY and Z

2.2.2 Define Piles for Location-Length and Pile Units

- Go to “DEFINE” and select “Pile Length and Unit”
- By default, pile locations are set at nodes as shown in Figure 7.

Note: On the computer screen, the Processor does not show the 8-node pile elements, but rather show the piles as one would see in reality. For instance, only one pile location is shown for a single pile analysis. The 8-node pile elements will be created automatically by the Processor when the data is saved. The “Pile Diameter” specified in the previous window is used as the length of a square pile section. *It is therefore noted that the spacing between a grid line and its adjacent pile should be at least greater than half of the diameter of the pile because the actual space of the pile will be inserted at the pile location.*

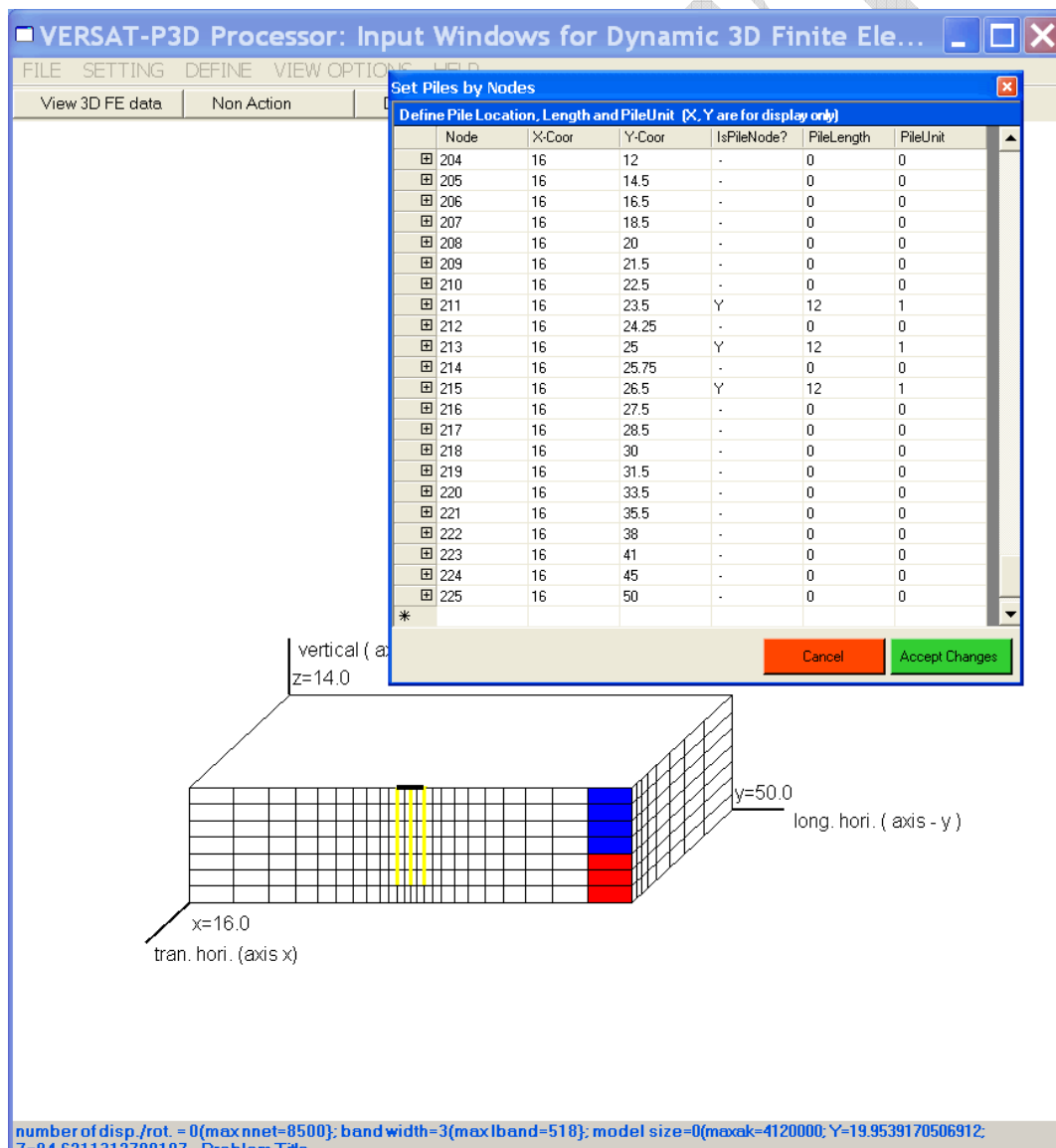


Figure 7 Define three piles at X=16 on the X-Symmetric Line

- Other two methods for defining pile locations can be activated by checking the “Pile Setting Method” under SETTING, as shown in Figure 8.
- The other two methods do not require insertion of pile elements because
 - When pile locations are set at element centre, the elements identified will become 8-node (or 4-Beam) pile elements. In this case, the 8-node pile elements may not be square, i.e., can be rectangular.
 - When pile locations are set using 2-node (or 1-Beam) pile elements, the piles are presented by a line and do not have physical space in 3D model.

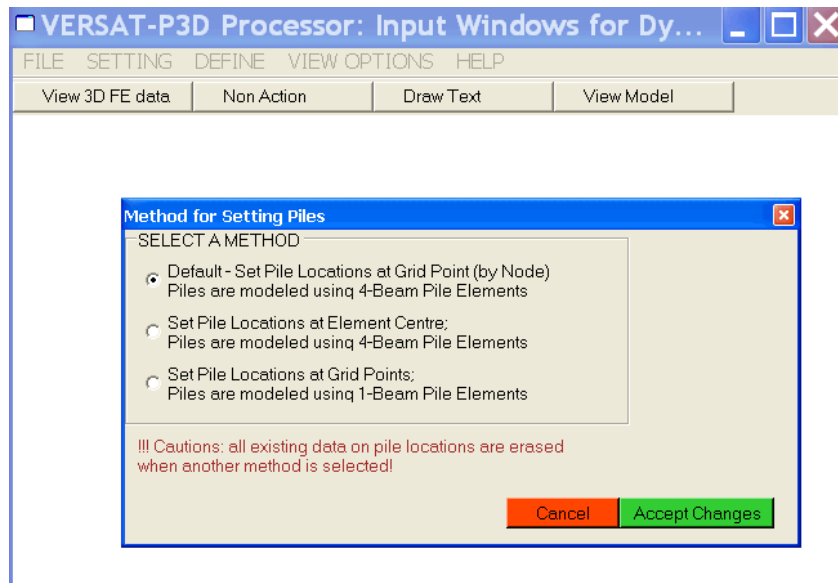


Figure 8 Methods for Setting Piles

- Once pile locations in plan are set, pile length and pile material unit of each individual pile will need to be defined in the same window as shown in Figure 7.
- It is noted that the pile length is the distance from the pile cap, the maximum Z-coordinate of the model, to the pile tip. The pile length is greater than the embedment depth of the pile (the distance from the ground surface to the pile tip) when the pile cap is elevated above the ground surface.
- It is further noted that, in a [Half-mesh analysis](#), different pile material numbers are assigned to piles that are located on the X-Symmetric line and to piles that are not. This is because piles on the X-Symmetric line require to be assigned a Reduction Factor of 0.5 in pile properties, meaning the same pile is equally shared by the other half of the grid that is not included in the analysis.
- This Reduction Factor of 0.5 does not apply to 8-node pile elements defined by the “Setting Piles at Element Centre” method because these 8-node pile elements are not shared by the other half of the grid, even in a Half-mesh analysis.

2.2.3 Define Properties of Pile and Soil Units

- Go to DEFINE and select “**Pile and Soil Properties**”
- For the example being illustrated, Unit 1 is assigned to the three piles on the X-Symmetric line and thus has a Reduction Factor of 0.5. Units 2 and 3 are assigned to the two soil units, the red and the blue zones shown on the vertical grids. Unit 4 is assigned to a Reduction Factor of 1.0 and other properties same as Unit 1, and it can be assigned to piles located not on the X-Symmetric line. Unit 4 is not used in this example.
- It is noted that the total unit weight should be assigned to piles and soils although they may be submerged.

VERSAT-P3D Processor: Input Windows for Dynamic 3D Finite Ele...

FILE SETTING DEFINE VIEW OPTIONS HELP

View 3D FE data Non Action Draw Text View Model

Input of Soil and Pile Properties

INPUT OF PILE PROPERTIES

PileUnit	YoungKe=E/Pa	SectionArea	UnitWeight	DampingRatio(%)	MomentInertia	ReductFactor	alpha(YOZ plane)	beta(Z-axis)
1	100000	1	25	4	0.05	0.5	0	0
4	100000	1	25	4	0.05	1	0	0
*								

INPUT OF SOIL PROPERTIES

SoilUnit	ShearKg=G/Pa	Poisson'sRatio	UnitWeight	InitDampingR. %	Curve No	StrainFactor	TensileStrength	YieldStrength
2	1000	0.48	20	5	1	0.65	1000	2000
3	2000	0.4	20	5	2	0.65	1000	2000
*								

Cancel Accept Changes

Figure 9 Assign Properties of Pile and Soil Units

2.2.4 Define Control Parameters for Analysis

- Go to DEFINE and select “Control Parameters”. This window will define what analysis will be carried out and how it is carried out.
- Figure 10 shows parameters under the **Loading Mode**. A combination of cyclic shear and moment (shear force=200 kN and bending moments=500 kN.m) is applied at the pile cap in a **Half-mesh** analysis while the piles are fixed to the pile cap. Note that “Shear of 100 and Moments of 250” are entered in the window. The frequency of the cyclic loads is 1 Hz (6.28 rad/sec). The loads will be divided into 6 increments and applied incrementally in a nonlinear analysis. A total of 10 analyses will be performed with the last load increment being iterated 5 times.

VERSAT-P3D GENERAL PARAMETERS

Loading Mode with Shear=200 kN, Moment=500 (Half-mesh)

Analysis Mode (IMODE)

- ☐ Impedance calculation (frequency domain)
- ☒ Harmonic Loads at pile cap (frequency domain)
- ☐ Shaking or Loading at pile cap (time-domain analysis)

Fixity at pile cap

- ☐ Pinned, M=0 at top
- ☒ Fixed to cap
- ☐ Fixed to cap + rot=0

Computing Impedance?

- ☒ Yes
- ☐ No

3D Finite Element Mesh

- ☒ Half Mesh
- ☐ Full Mesh

Method of Analysis

- ☐ Linear Elastic
- ☒ Non-linear

NOMEG, OMEG0

N_OMEG= 10

OMEG_0 = 6.28 (rad/s)

Analysis Constants

Gravity acceleration, g (m/s², or ft/s², or...)

9.81

Unitweight of water (kN/m³, or lb/ft³,...)

9.81

Atmospheric pressure, Pa (kPa, or lb/ft², ...)

101.3

DOMEG

D_OMEG= 0 (rad/s)

Pile Loads

Shear (kN, kips)

100

Moments (kN.m; kips.ft)

250

Cancel OK

Figure 10 Define Parameters under Loading Mode

2.2.5 Define Parameters for Shaking Mode

- In Figure 10, click **Shaking Mode** under “Analysis Mode”
- Go to DEFINE and select “**Setup for Shaking Mode**”
- In Figure 11, an acceleration record from the 1971 San Fernando Earthquake will be appended MANUALLY by the user at the end of PILE3D.P3D. The record is written in 8 columns with a comma separating two columns. The first 2000 acceleration points from the record will be used in the dynamic analysis. The time increment for the record is 0.02 sec, and the acceleration values will be multiplied by 9.81 to convert into the unit of m/s^2 for accelerations to be used in the analysis (assuming the original values are in g).
- Time-histories response at node 500 and element 200 will be saved under PILE3D.HIS.
- No external mass or stiffness is applied at the pile cap (all zero in entries).

For earthquake shaking or horizontal loading at a node (IMODE=2 for time-domain analysis)

Shaking or Loading ?

☒ Earthquake shaking
☐ Dynamic Shear Force at a node such as the cap, Node=

Type of Loads ?

☐ Harmonic (SINE)
☒ Irregular earthquake acceleration/load

Title of SINE or earthquake motion is

Acceleration Records from the 1971 San Fernando Earthquake

Acce/load points will be used in analysis, NPOINT Time increment DTIME (sec)

Amplitude of SINE, AMP = Frequency of SINE in Hz =

Scaling factor, FAMPL Number of data columns in acce/load record,

Apply external mass and/or stiffness at the pile cap

Node	Mass	M.M.I.	Kyy	Cyy	Kyr	Cyr	Krr	Crr	Pile Cap Node
0	0	0	0	0	0	0	0	0	0

Number of points for time-hsitory output (+5 for node 5; -10 for element 10)

NOTES:

Kyy, Cyy = horizontal stiffness/damping
 Kyr, Cyr = coupling stiffness/damping
 Krr, Crr = rotational stiffness/damping
 M.M.I. = mass moment of inertia

Earthquake records are to be appended MANUALLY to the end of the input file, i.e., **PILE3D.P3D**

1. values in the records are interpreted as acceleration (such as m/s^2) for Shaking option
 2. values in the records are interpreted as force (such as kN,) for Loading option
 3. when the record length is less than NPOINT, zero is used to make up the remaining.

Figure 11 Define Parameters under Shaking Mode

2.3 Start An Analysis

- Save the prepared data as **PILE3D.P3D**
- Re-load the saved data back. The Processor can then verify the size of the model being less than the maximum allowed size, and show the node and element information of the 3D model. Without a reloading, these data are not available.
- Run **VERSAT-P3D Run.exe** under either Windows or Dos environment. Make sure that **PILE3D.P3D** is under the same directory as **VERSAT-P3D Run.exe**.

2.4 Retrieve Time-History Response

A separate computer program, called **V-his3d.exe**, is used to retrieve the time-history from **PILE3D.HIS**, a binary file containing time-history response. Another input file to **V-his3d.exe** is **PILE3D.IN**.

An example of **PILE3D.IN**, containing only two lines, is as follows:

Line 1: 4, 0, 0,
Line 2: 1, 2, 3, 4,

Line 1:

NDATA	Total number of time-histories is requested;
N1	0, always
N2	0, not used

Line 2:

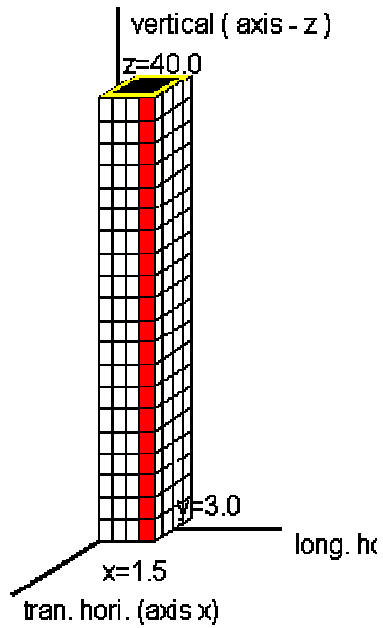
List of codes representing the specific quantity (such as acceleration, displacement, bending moment, shear force, etc.). These codes for retrieving a time-history response at a node or in an element are printed at the end of the output file, **PILE3D.OU2**.

3.0 EXAMPLES OF VERSAT-P3D MODELS

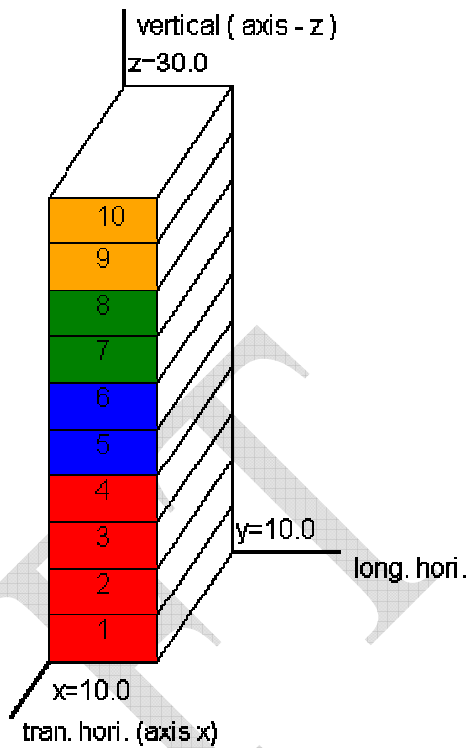
The example models shown in Figure 12 include the following:

- a). Structural analysis of vertical caissons only
- b). Analysis of free field response using a 10-layer model
- c). Analysis of a 12-pile group (shown as 8-pile group in a half-mesh analysis) with an elevated pile cap
- d). Analysis of a large 44-pile group (shown as 24-pile in a half-mesh analysis)

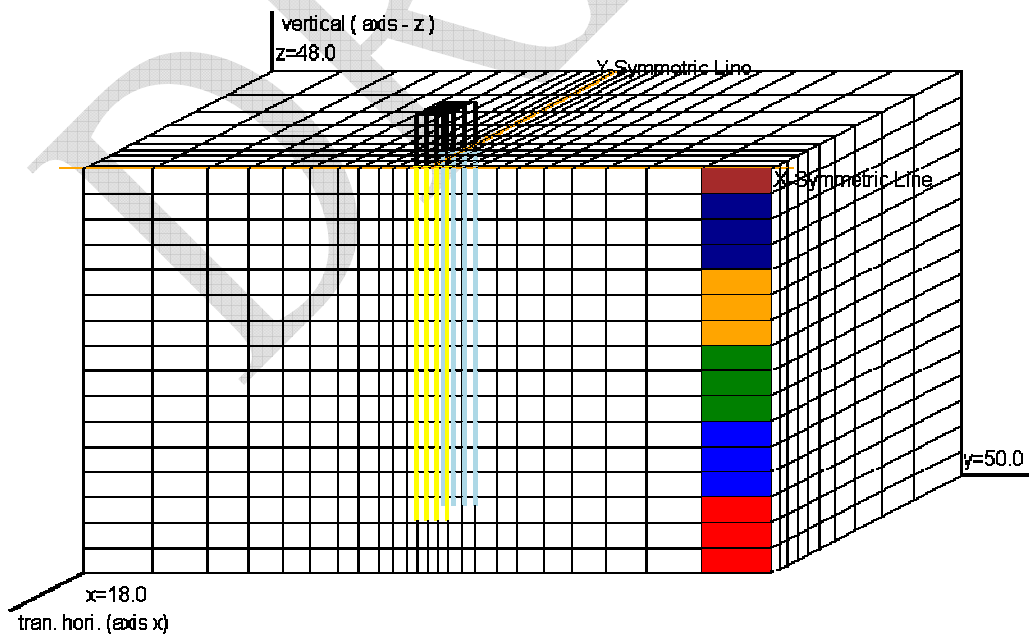
Analyses of these models are tasks for the users to complete..



a). Structural analysis of vertical caissons only

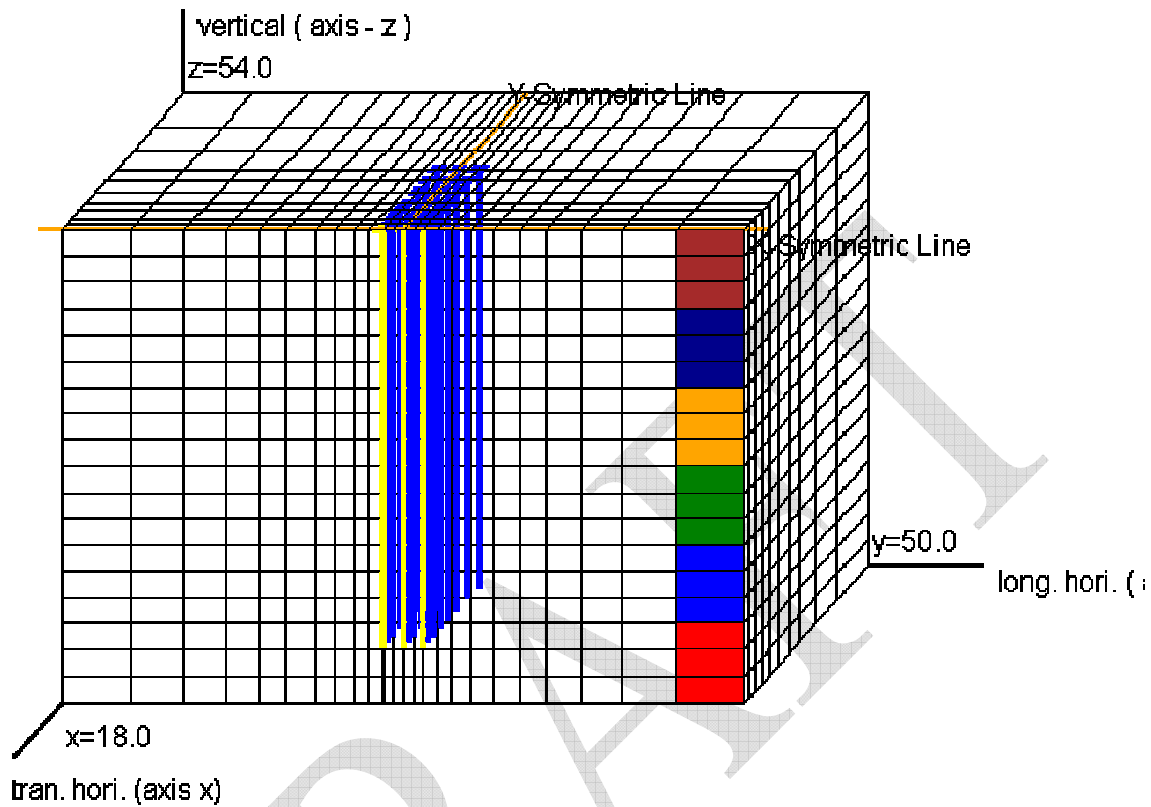


b). Analysis of free field response using a 10--layer model



c). VERSAT-P3D Model for analysis of 12-pile group (shown as 8-pile group in a half-mesh analysis) with an elevated pile cap

A large 44-pile group in a half-mesh analysis



d). VERSAT-P3D model for analysis of a large 44-pile group (shown as 24-pile in a half-mesh analysis)

Figure 12 Examples of VERSAT-P3D Models

4.0 REFERENCES

Idriss, I.M., Lysmer, J., Hwang, R., and Seed, H.B. 1973. QUAD-4: A computer program for evaluating the seismic response of soil-structures by variable damping finite element procedures. Report No. EERC 73-16, Earthquake Engineering Research Centre, University of California, Berkeley, California.

Idriss, I.M., Seed, H.B., and Serff, N. 1974. Seismic response by variable damping finite elements. ASCE Journal of Geotechnical Engineering, 100: 1-13.

Schnabel, P.B., Lysmer, J., and Seed, H.B. 1972. SHAKE: A computer program for earthquake response analysis of horizontally layered sites. Report No. EERC 72 12, Earthquake Engineering Research Centre, University of California, Berkeley, California.

Seed, H.B., and Idriss, I.M. 1970. Soil moduli and damping factors for dynamic response analyses. Report No. EERC 70 10, Earthquake Engineering Research Center, University of California, Berkeley, California.

Seed, H.B., Wong, R.T., Idriss, I.M., and Tokimatsu, K. 1986. Moduli and damping factors for dynamic analyses of cohesionless soils. ASCE Journal of Geotechnical Engineering, 112: 1016-1032.

Wu, G. 1994. Dynamic soil-structure interaction: Pile foundations and retaining structures. Ph.D. thesis, Department of Civil Engineering, the University of British Columbia, Vancouver, B.C., Canada.

Wu, G., and Finn, W.D.L. 1997a. Dynamic elastic analysis of pile foundations using finite element method in the frequency domain. Canadian Geotechnical Journal, 34: 34-43.

Wu, G., and Finn, W.D.L. 1997b. Dynamic nonlinear analysis of pile foundations using finite element method in the time domain. Canadian Geotechnical Journal, 34: 44-52.

Wu, G. and W.D.L. Finn, 1999. Seismic lateral pressures for design of rigid walls. Canadian Geotechnical Journal, 36: 509 - 522